


ADVERTISEMENT FOR SEALED BIDS

The DeKalb County Commission will on Thursday, July 9, 2026 at 10:00 a.m. receive sealed bids for the "Delivery & Installation of one (1) FEMA 361 Compliant pre-fabricated structure 27'4" x 28' along with reinforced concrete foundation & ancillary equipment/utilities at the Adamsburg Volunteer Fire Department". Bids will be received up to and publicly opened at the above stated date and time at the DeKalb County Commission Office, 111 Grand Ave. SW, Fort Payne, AL 35967. Bid packages may be obtained from the DeKalb County Commission website at www.dekalbcountyal.us/current-bids/, or may be requested from the County Engineer's Office at 111 Grand Ave. SW, Suite 115, Fort Payne, AL 35967 or by telephone at (256) 845-8584. Contractor prequalification is not required. Bidders must meet the requirements of the Alabama State Law Regarding General Contractors (Code of Alabama 1975, Title 34, Chapter 8, as amended). Bidders must have an up-to-date and valid State of Alabama General Contractor's License within the proper classification for the project being bid. Bidders must include their license number on the Bid Proposal Form. Any bid received which does not contain the license number on the form will not be considered. Also the structure manufacturer must have an up-to-date and valid Alabama Manufactured Housing Commission license number and it shall be provided in the proposal where requested.

THE DEKALB COUNTY COMMISSION


Ricky Harcrow, President

BPL

6/1/2026
Date



DEKALB COUNTY COMMISSION

Suite 200

111 Grand Ave., S.W.

Fort Payne, AL 35967

Phone: (256) 845-8500 Fax: (256) 845-8502



INVITATION TO BID

**DELIVERY & INSTALLATION OF ONE (1)
FEMA 361 COMPLIANT PRE-FABRICATED STRUCTURE 27'4" x 28'
ALONG WITH REINFORCED CONCRETE FOUNDATION &
ANCILLARY EQUIPMENT/UTILITIES
AT THE ADAMSBURG VOLUNTEER FIRE DEPARTMENT**

DeKalb County Commission

To Interested Vendors:

The DeKalb County Commission is requesting sealed bids on the above referenced project.

If you have questions about the Bid Invitation, please call the DeKalb County Engineer's Office at (256)845-8584.

SHIPPING AND DELIVERY TERMS:

F.O.B.: PROJECT SITE

100 BLOCK OF COUNTY ROAD 255

FORT PAYNE, AL 35967

DELIVERY DATE:

AS REQUESTED

TERMS OF PAYMENT:

MONTHLY AS WORK PROGRESSES

BIDS WILL BE OPENED ON:

JULY 9, 2026

AT 10:00 A.M.

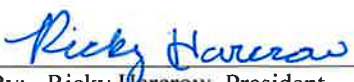
BIDS SHALL BE DELIVERED TO:

SUITE 200, 111 GRAND AVE., S.W., FORT PAYNE, ALABAMA, 35967

SPECIFICATIONS:

Specifications are patterned after goods and services that have been reviewed and found desirable. This is not to discourage any bidder; rather, you are encouraged to bid any goods or services that will meet specifications. If applicable, please note how your goods or services may differ in a "bid exception" statement, and attach it to your bid. **A BID GUARANTY IN THE AMOUNT OF 5% OF THE TOTAL MAXIMUM BID, BUT NOT TO EXCEED \$10,000.00, IS REQUIRED. THE GUARANTY MAY BE IN THE FORM OF A BID BOND OR A CASHIER'S CHECK DRAWN ON AN ALABAMA BANK. (Code of Alabama 1975, § 39-2-4(a)).**

INVITATION DATE: 05 / 28 / 2026


By: Ricky Harcrow, President
DeKalb County Commission

BPL

INVITATION FOR BIDS
DEKALB COUNTY COMMISSION
SUITE 200
111 GRAND AVENUE, S.W.
FORT PAYNE, AL 35967

NOTICE: In accordance with Title 39, Code of Alabama 1975, as amended, notice is hereby given that the DeKalb County Commission will receive competitive bids on the following items. Sealed bids will be received by the DeKalb County Commission until the date and time specified below, and then publicly opened and read.

**DELIVERY & INSTALLATION OF ONE (1)
FEMA 361 COMPLIANT PRE-FABRICATED STRUCTURE 27'4" x 28'
ALONG WITH REINFORCED CONCRETE FOUNDATION &
ANCILLARY EQUIPMENT/UTILITIES
AT THE ADAMSBURG VOLUNTEER FIRE DEPARTMENT**

BID DATE: JULY 9, 2026 at 10:00 A.M.

STANDARD INSTRUCTIONS TO BIDDERS

The bid award will not be based solely on price. Other factors such as compliance with specifications, value, delivery time, support and service, and warranty time and conditions will be considered to determine the best bid. The DeKalb County Commission reserves the right to reject any or all proposals.

Delivery of Bid: It shall be the responsibility of the bidder to see that proper delivery of his/her bid is made to the DeKalb County Commission at the above address and prior to specified bid-opening time. Deliveries may be made in person, by mail or delivery service, but it is the sole responsibility of the bidder to determine whether or not delivery has been completed prior to the bid-opening time.

1. *Non-Discrimination Statement:* No bids shall be accepted without a statement signed by an officer of the bidder's company that the company does not discriminate in hiring due to race, color, creed, sex, national origin, religion, age or handicap.
2. All bids *must be sealed* and the word "BID" and the nature of the bid marked on the envelope.
3. All bids shall be *typewritten or written in ink*. They must be signed by an official of the corporation / company duly authorized to sign bids, and all bids shall be notarized.
4. All *corrections and erasures* shall be initialed by the person signing the bid or his/her authorized representative.
5. Bids may be *amended or withdrawn* by the party submitting such bid or by their authorized representative up until the scheduled opening time. No bid may be amended or withdrawn thereafter regardless of the circumstances.
6. Prices quoted in all bids *shall be delivered prices*, exclusive of all federal and state excise, sales, and manufacturer's taxes; and the DeKalb County Commission will assume no transportation or handling charges other than those specified in this bid.
7. It will be assumed that all bids are *based upon specification requirements* furnished with the bid invitation unless the bidder stipulates to the contrary on his/her bid response, in which case, the bidder will list on a separate sheet of paper any exceptions to the conditions of the bid. This sheet shall be clearly labeled "EXCEPTIONS TO BID CONDITIONS", and will be attached to the bid proposal. This attached sheet must also be signed by the same official. If no exceptions are stated, it will be understood that all general and specific conditions will be met.
8. The DeKalb County Commission *reserves the right for a product demonstration* of any or all bid items by the bidder representative before making the award.
9. All items *bid will be inspected* by a representative of the DeKalb County Commission upon delivery to ascertain compliance with the bid specifications. Items not in compliance with the specifications will be rejected and shall be replaced by the vendor at no cost to the County.
10. The successful bidder *shall indemnify and save harmless* the DeKalb County Commission against any and all claims for royalties, patent infringements or suits for information thereon which may be involved in the manufacture or use of the items to be furnished under the bid.
11. Whenever in this invitation any particular materials, process and/or equipment are indicated or specified by patent, proprietary or brand name, or by name of manufacturer, such wording will be deemed to be used for the purpose of facilitating a description of the bid material, process and/or equipment desired, and will be deemed to be followed by the word "EQUIVALENT". Proof satisfactory must be provided by bidder to show that the alternative product is, in fact, equal to the product required in the specifications.

GENERAL CONDITIONS:

1. Please check and make sure bid is signed and notarized in the space provided. The right to reject any and all bids is reserved.
2. Pursuant to *Code of Alabama 1975, § 39-2-4(a)*, a bid guaranty in the amount of **5% of the total maximum bid, but not to exceed \$10,000.00** is required and shall be submitted with the sealed bid.
3. As defined in Act No. 2011-535 of the Alabama Legislature, as a condition of an award of a contract with a state or local governmental entity, the business entity “shall not knowingly employ, hire for employment, or continue to employ an unauthorized alien and shall attest to such, by sworn affidavit signed before a notary.” Additionally, the business entity “shall provide documentation establishing that [it] is enrolled in the E-Verify program” and that during the contract period, it “shall participate in the E-Verify program and shall verify every employee that is required to be verified according to the applicable federal rules and regulations.” Therefore, the included affidavit must be completed and returned with the bid. Failure to submit the affidavit with the bid shall result in noncompliance with the bid requirements and shall give cause to reject the bid.
4. Bidder must have an up-to-date and valid State of Alabama General Contractor’s License within the proper classification for the project being bid. Bidders must include their license number on the Bid Proposal Form. Any bid received which does not contain the license number on the proposal form will not be considered. Also, the structure manufacturer must have an up-to-date and valid Alabama Manufactured Housing Commission license number, and must be included where requested.
5. A 100% Performance Bond, a 50% Payment Bond, Proof of Liability Insurance and Workman’s Compensation Insurance must be obtained by the low bidder, along with the executed Contract, and presented to the County Commission within fifteen (15) days of the Commission’s concurrence and award of the contract based on the low bid or bids.
6. A **Performance Bond**, covering a period of one year, shall be submitted before any work is started. The Performance Bond shall be in the amount of **100%** of the contract price.
7. A **Payment Bond**, covering a period of one year, shall be submitted before any work is started. The Payment Bond shall be in the amount of **50%** of the contract price.
8. Proof of Liability Insurance and Workman’s Compensation Insurance shall be submitted before any work is started. The General Liability Insurance shall be a minimum of \$500,000.
9. Time charges will begin on the date structure is available as designated by structure manufacturer, and bidder agrees to fully complete the project within **60 working days** (Working Days are Monday through Friday). Liquidated Damages will be assessed at \$500.00 per working day.
10. Pay estimates shall be submitted to the County Engineer’s Office monthly and payment shall be made at the next regular County Commission meeting after submission and verification of estimates. **Bidders are hereby notified that this contract is subject to Code of Alabama 1975, § 39-2-12, Partial Payments and Retainage.**

SPECIAL CONDITIONS:

1. The items of work included herein are for the delivery and installation of a FEMA 361 compliant structure; the excavation and construction of a beam-type reinforced concrete foundation; construction of concrete landings; and the installation and connection of potable water, electrical, and sanitary sewer service stub-out.
2. The contractor is solely responsible for onsite safety and security.
3. The contractor is solely responsible for any and all necessary erosion and sediment control measures required to protect the site and surrounding property. An ADEM permit is not required, as the site is less than one (1) acre in size. Contractor shall also take all necessary steps to protect the foundation excavation prior to placement of steel reinforcement and concrete.
4. Contract time charges will be suspended during concrete curing, installation of the modular sections, and any conditions deemed to be out of the Contractor's control.
5. See Plan Sheet No. 2, "Project Notes & General Details", for specific item requirements and proposed "Sequence of Construction".
6. The lengths of utility installations are approximate only. Paid quantities will be determined by field measurement during and after installation. The installation of the electrical service system will need to be coordinated with Fort Payne Improvement Authority (FPIA), the local electrical provider.
7. The storm shelter modules are to be fully wired for electrical and plumbed for potable water and sanitary sewer. This contract includes the exterior installation and interior connection to the existing systems after installation of the modules. The potable water and sanitary sewer will require stub-outs up through the floor slab blockout and under the bottom of the foundation excavation. The main electrical service will be underground from the meter service structure to the outside of the back of the module containing the electrical breaker box, where it will be installed through an existing porthole and wired into the existing breaker box main. The installation of the onsite sanitary sewer system is NOT a part of this contract.
8. The DeKalb County Engineer's Office is willing to provide surveying services to stake in the field the four (4) exterior corners of the proposed concrete foundation. Contractor will be responsible for determining the proper elevation. Contractor will be responsible for setting his/her own offsets and elevations.

Project Reference: **FEMA 361 COMPLIANT Pre-Fabricated Structure 27'4" X 28'**

This document outlines the MINIMUM configuration and equipment for an ICC500/FEMA361 compliant structure.

A) Qualifiers

Basis of Supply. The structure will be a special product that features:

- 4" thick walls of steel rebar reinforced high strength concrete
- large missile impact tested (15 lb. 2x4 at 100 mph) per ICC500
- a UL752 Level 4 (single shot from 30.06 caliber rifle at 15 feet) ballistic rating for concrete wall panels only
- a 2-Hour fire rating per UBC
- welded structural connections
- non-exposed structural seals

Fire Sprinkler System Disclosure. The shelter structure herein does not include an NFPA approved fire sprinkler system. Purchaser is responsible for all sprinkler system installation costs that may be required by authorities having permitting jurisdiction.

B) Product Configuration Summary

I. Structure

- shelter structure — FEMA 361 compliant **27'4" WOD x 28'0" LOD x 8'0" HID** with insulated interior finish and two restroom areas with door accessible service closet (2 - 13'8" WOD X 28' LOD X 8' HID Modules)
- shelter occupancy - approximately 100 occupants
- stem wall design with 8' wide pass through opening between modules
- shelter roof profile - single panel (each module) low slope (1/4" inch per foot) one direction away from module mate line
- interior partition walls - wood frame construction
- restroom areas - two (2) separate single user areas designated Men's & Women's (both ADA compliant)
- fixtures Men's user area - one (1) toilet and one (1) sink
- fixtures Women's user area - one (1) toilet and one (1) sink

II. Finishes

- exterior wall panels - broom smoothed concrete
- roofing material - rubber sealing membrane (fully adhered with fascia termination strip)
- interior finish — white faced 3/4" thick plywood over rigid foam board insulation (R11 wall factor, R19 ceiling factor)
- finished floor — 12"x12" commercial grade vinyl tile with 4" flexible cove molding door frames and doors - paint over metal primer

III. Doors & Windows

- entry doors - two (2) 3' x 7' size exterior, steel, cast-in FEMA 361 rated outswing with NRP non-corrosive hinges, aluminum threshold & sweep, weather stripping, hydraulic closer with hold open feature
- entry door locks - two (2) lever handle, Sargent 8700 series, or equivalent, surface mount FEMA compliant two-point latching system
- restroom entry doors - two (2) 3' x 7' size interior steel, with lever handle lock and hardware
- service area entry door - one (1) 2'6" x 7' size interior steel with lever handle locks and hardware

IV. Electrical

- one (1) 120/240-volt, single phase. 100-amp main breaker load panel with enclosure & breakers
- surface mounted EMT conduit, boxes, fittings and clamps
- conductor (as required) for distribution of electrical service
- shelter convenience receptacles - wall mounted duplex
- restroom GFCI - two (2) wall mounted duplex receptacles

V. Heating, Cooling & Ventilation

- heat & cooling - one (1) 12,000 BTU, ductless style electric heat pump system consisting of one (1) condensing unit and one (1) air handling unit with thermostat control
- emergency ventilation - Two (2) 18"x18" Motorized Ventilation Louver (Fail Open) each with an exterior FEMA rated protective hood to provide a minimum of 6 sq. inch per occupant passive ventilation per ICC500.
- restroom use ventilation - one (1) in-line electric exhaust fan and ducting from user areas to a common exhaust vent with exterior FEMA rated protective hood

VI. Lighting

- exterior - two (2) weather proof fixtures with battery backup
- interior overhead - switch controlled, 48" dual bulb fluorescent fixtures
- interior emergency/exit - two (2) double head combination fixtures with minimum 2-hour back-up battery and charger
- interior emergency — five (5) double head fixtures with minimum 2-hour battery back-up and charger (2 in shelter area, 1 in each bathroom, 1 chase)

VII. Restroom Items

- toilets - two (2) floor mounted, white vitreous china tank style with hinged plastic seat and manual flush valves
- sinks - two (2) wall mounted, white vitreous china
- sink faucets - two (2) push button, slow closing, metering
- ADA support bar(s) - stainless steel with hardware as required
- toilet tissue dispensers - two (2) wall mounted, stainless steel, multiple roll
- mirrors - two (2) wall mounted, 18"x36" stainless steel
- hot water supply - one (1) 6-gallon electric compact tank style wall mounted in service area
- floor drains - two (2) 2" size with covers

VIII. Accessories & Safety Items

- building signage
- one (1) building accessories package that includes:
 - a) one (1) 24"D x 12"W galvanized steel wall mounted shelving unit
 - b) one (1) Midland crank power emergency radio
 - c) two (2) first aid kits
 - d) one (1) 10 Lb. general purpose fire extinguisher

C) General Terms and Qualifiers

Scope of Work. The scope of work covered is limited exclusively to the following:

- a) the necessary documentation and certification of the shelter design/construction to satisfy FEMA 361/ICC500 structural guidelines
- b) manufacture of the modules as outlined in the Product Configuration Summary Section B above
- c) supply of an approved foundation design
- d) supply a set of approved plans with the red Alabama Manufacturing Housing Commission stamp
- e) construct reinforced concrete foundation, install required utility connections, and stabilize site as shown on plan sheets
- f) provide transportation of the modules to the site
- g) provide crane services to off-load and set modules
- h) provide personnel to assemble and finish (exterior and interior) modules as complete structure

Certifications. Winning bidder will comply with State Building Programs where required. Local/municipal inspections/approvals, including site inspections, building permits, and zoning approvals, are purchaser's responsibility.

Completion & Delivery. Bidder shall provide estimated delivery date or timeframe of structure from date of receipt of purchaser approval of design/engineering drawings.

Engineering. Upon receipt of customer approval for design submittals, this proposal includes up to three (3) PE sealed analysis packages.

General Commercial Terms. Terms for all invoices will be Net 30 days.

Warranty. Will carry a one (1) year structural warranty. All peripheral components, equipment and accessories will carry their original manufacturers' warranties.

Name of Structure Manufacturer

AMHC License Number

Manufacturer Address & Phone Number

Delivery Date or Timeframe from Purchaser Approval: _____

CONTRACT SCHEDULE
Delivery and Installation of one (1) FEMA 361 Compliant Pre-fabricated Structure 27'4" x 28'
along with Reinforced Concrete Foundation and Ancillary Equipment/Utilities
at the Adamsburg Volunteer Fire Department
DeKalb County, Alabama

Item No.	Description	Quantity	Unit	Unit Price	Total
1	FEMA 361 COMPLIANT STRUCTURE, 27'4" x 28'	1	LUMP SUM	\$	\$
2	STRUCTURE DELIVERY/FREIGHT CHARGES	1	LUMP SUM	\$	\$
3	CRANE SERVICES	1	LUMP SUM	\$	\$
4	MOBILIZATION	1	LUMP SUM	\$	\$
5	REINFORCED CONCRETE FOUNDATION	1	LUMP SUM	\$	\$
6	6' x 6' CONCRETE LANDINGS, 4 INCHES THICK	2	EACH	\$	\$
7	VAPOR BARRIER, 12 MIL	516	SQ. FT.	\$	\$
8	COMMERCIAL BACKFILL, #57	5	CU. YD.	\$	\$
9	OVERHEAD SERVICE ELECTRICAL METER POLE, 200A	1	EACH	\$	\$
10	UNDERGROUND ELECTRICAL SERVICE, INCLUDING CONDUIT	40	LIN.FT.	\$	\$
11	4" DIA. SCH. 40 PVC SANITARY SEWER HEADER PIPE	20	LIN. FT.	\$	\$
12	3/4" DIA. POTABLE WATER SERVICE LINE, INCLUDING STUBOUT CASING	80	LIN. FT.	\$	\$
13	SEEDING & MULCHING (< 1 ACRE)	1	LUMP SUM	\$	\$
	CONTINGENCY ITEMS				
14	OVER-EXCAVATION OF FOOTINGS		CU. YD.	\$	
15	STRUCTURAL FILL (LEAN CONCRETE)		CU. YD.	\$	

Total \$

BIDDER'S RESPONSE

By signing and submitting the "Invitation for Bids", bidder declares that he/she does not discriminate in hiring on the basis of race, color, national origin, sex, religion, age or handicapped status.

Name of Company

State of Alabama General Contractor's License Number

Business Address / Telephone Number / Email

Typed or Printed Name of Authorized Representative / Title

Authorized Representative Signature

Date

*** IF SHEET IS NOT SIGNED AS DESIGNATED, BID IS VOID ***

NOTARY CERTIFICATE

STATE OF _____

COUNTY OF _____

I, the undersigned, a Notary Public in and for said County and State, hereby certify that the above Authorized Representative, whose name is signed to the foregoing conveyance, and who is known to me, acknowledged before me this date that, being informed of the contents of the conveyance, executed the same voluntarily on the day the same bears date.

Given under my hand and official seal this _____ day of _____, 2026.

My commission expires _____.

Notary Public

STATE OF _____

COUNTY OF _____

AFFIDAVIT

Before me, the undersigned authority, personally appeared _____ (affiant) who, being by me first duly sworn, doth depose and say as follows:

I _____ (name), on behalf of _____ (business entity), and with lawful authority to act in its behalf, attest to the following from personal knowledge:

1. _____ (business entity) does not knowingly employ, hire for employment, or continue to employ any unauthorized aliens in the State of Alabama; and
2. _____ (business entity) is enrolled in the E-Verify Program as shown by the attached documentation.
3. _____ (business entity) does and will utilize the E-Verify Program to verify the employment status of employees and potential employees according to federal rules and regulations.
4. _____ (business entity) shall acquire from its subcontractors notarized affidavits that they will not knowingly employ, hire for employment or continue to employ unauthorized aliens, that they will enroll in the E-Verify Program before performing any contract work or providing any product, and that they shall attach to the affidavits, documentation establishing their enrollment in E-Verify as required by Act No. 2011-535.

Signature of Affiant

I, the undersigned Notary Public, in and for said County and State, hereby certify that _____ whose name is signed to the foregoing Affidavit, and who is known to me, acknowledged before me on this date that, being informed of the contents of the above and foregoing affidavit, he/she as an officer of _____ (business entity) and with full authority, executed the same voluntarily for and as the act of said company on the day the same bears date.

Given under my hand and official seal of office this _____ day of _____, 2026.

Notary Public

My Commission Expires _____

BIDS WILL NOT BE CONSIDERED UNLESS THIS FORM FOR BID BOND IS USED AND IS SIGNED IN INK BY PRINCIPAL AND SURETY.

BID BOND

KNOW ALL MEN BY THESE PRESENTS:

That _____ of
(Name of Contractor)

(Address)

as Principal, and _____ of
(Name of Surety)

_____, as Surety,
(Address)

are held firmly bound unto DEKALB COUNTY COMMISSION, a Political Subdivision of and Body Corporate in the State of Alabama as Obligee, in the full and just sum of FIVE PERCENT (5%) OF AMOUNT BID (Maximum Amount of Bond \$10,000), lawful money of the United States, for the payment of which sum, well and truly to be made, we bind ourselves, our heirs, executors, administrators, successors and assigns, jointly and severally, firmly by these presents.

WHEREAS, the said Principal is herewith submitting its proposal for

**Delivery & Installation of one (1) FEMA 361 Compliant
Pre-fabricated Structure 27'4" x 28' at the Adamsburg Volunteer Fire Department**

The condition of this obligation is such that if the aforesaid Principal shall be awarded the contract the said Principal will, within the time required, enter into a formal contract and give a good and sufficient bond to secure the performance of the terms of and conditions of the Contract, then this obligation to be void; otherwise, the Principal and the Surety will pay unto the Obligee the difference in money between the amount of the Contract as awarded and the amount of the proposal of the next lowest responsible bidder, which amount shall not exceed \$10,000. If no other bids are received, the full amount of the proposal guarantee shall be so retained or recovered as liquidated damages for such default.

Witness our hands and seals this _____ day of _____, 2026.

Signature of Individual Bidder: (Use only where bidder is an individual)

_____, Doing business as _____
(Name of Individual) (Business Name)

Business Mailing Address: _____
(Mailing Address)

Name of Corporation, Partnership, or Joint Venture:

(Name of Partnership, Joint Venture or Corporation)

Business Mailing

Address: _____

(Address)

BY: _____ (L.S.)
(Signature and Position or Title of Officer
Authorized to Sign Bids and Contracts for Firm)

Business Mailing

Address: _____

(Address)

BY: _____ (L.S.)
(Signature and Position or Title of Officer
Authorized to Sign Bids and Contracts for Firm)

Business Mailing

Address: _____

(Address)

BY: _____ (L.S.)
(Signature and Position or Title of Officer
Authorized to Sign Bids and Contracts for Firm)

(Corporate Seal)

Attest: _____
(Secretary)

Name of State under the laws of which the
Corporation was chartered:

(State)

(Corporate Seal)

Attest: _____
(Secretary)

Name of State under the laws of which the
Corporation was chartered:

(State)

SURETY: _____
(Name of Surety)

BY (AGENT): _____
(Attorney in Fact)

AGENT'S ADDRESS: _____

(Mailing Address)

NOTICE: Valid Power of Attorney Must Be Attached.

**END
OF
PROPOSAL**

CONTRACT FORM
FEMA 361 Compliant Structure 27'4" x 28'
at the Adamsburg Volunteer Fire Department

THIS AGREEMENT, made this ____ day of _____ 2026, by and between the **DeKalb County Commission**, herein called "Owner" acting herein through **Ricky Harcrow, President**, and _____ of _____, County of _____ and State of _____, hereinafter called "Contractor."

WITNESSETH: That for and in consideration of the payments and agreements hereinafter mentioned, to be made and performed by the OWNER, the CONTRACTOR hereby agrees with the OWNER to commence and complete the construction described as follows:

Delivery and Installation of one (1) FEMA 361 Compliant Pre-Fabricated Structure 27'4" x 28' along with Reinforced Concrete Foundation & Ancillary Equipment/Utilities at the Adamsburg Volunteer Fire Department;

hereinafter called the Project, for the sum of _____ Dollars (\$ _____) and all extra work in connection therewith, under the terms as stated in the Specifications and General Conditions of the Contract; and at his/her (its or their) own proper cost and expense to furnish all the materials, supplies, machinery, equipment, tools, superintendence, labor, insurance, and other accessories and services necessary to complete the said project in accordance with the conditions and prices stated in the Proposal and Specifications as prepared by the DeKalb County Engineer; of which are made a part hereof and collectively evidence and constitute the contract.

The Contractor hereby agrees to commence work under this contract on or before a date to be specified in a written "Notice to Proceed" by the Owner and to fully complete the project within **60 working days** from the specified date of structure availability.

The OWNER agrees to pay the CONTRACTOR in current funds for the performance of the contract, subject to additions and deductions, as provided in the Specifications and General Conditions of the Contract, and to make payments on account thereof monthly as work progresses and estimates are verified.

IN WITNESS WHEREOF, the parties to these presents have executed this contract in the year and day first above mentioned.

ATTEST:

(Seal)

DeKalb County Commission
(Owner)

County Administrator

By: _____
Ricky Harcrow

(Witness)

President
(Title)

(Seal)

(Contractor)

(Secretary)

By: _____

(Witness)

(Name & Title)

(Address and Zip Code)

NOTE: Secretary of the Owner should attest. If a Contractor is a corporation, Secretary should attest.

INSTRUCTIONS FOR BONDS

1. The full name (given, initial, surname) and residence of each individual party to the Bonds must be inserted in the first paragraph.
2. If the Principal is a partnership, the full name of all partners must be inserted in the first paragraph which must recite that they are the partners composing the partnership (to be named) and all partners must execute the Bonds as individuals.
3. The State of Incorporation of each corporate party to bonds must be inserted in the first paragraph and the Bonds must be executed under the Corporate Seal of each party attested by its Secretary or other appropriate Officer.
4. The date of the Bonds must not be prior to the date of the Contract.

PERFORMANCE BOND

KNOW ALL MEN BY THESE PRESENTS: That we _____
_____ hereinafter called the Principal, and
(Insert here the name & address of legal title of the Contractor)

(Insert here the name and address of legal title of one or more sureties)
hereinafter called the Surety or Sureties, are held and firmly bound unto the DeKalb County Commission, a political subdivision of and Body Corporate in the State of Alabama, hereinafter called the Owner in the penal sum of _____ Dollars (\$_____) for the payment whereof the Principal and the Surety or Sureties bind themselves, their heirs, executors, administrators, successors and assigns, jointly and severally, firmly, by these presents.

WHEREAS, the Principal has, by means of a written agreement, dated _____
(Date of Contract)
entered into a contract with the Owner for:

**Delivery & Installation of one (1) FEMA 361 Compliant
Pre-fabricated Structure 27'4" x 28' at the Adamsburg Volunteer Fire Department**

which agreement is by reference made a part hereof,

NOW THEREFORE, The conditions of this obligation is such that if the Principal shall faithfully perform the Contract on his part, and satisfy all claims and demands, incurred for the same, and shall fully indemnify and save harmless the Owner, its officers, appointees, employees, and agents from all cost and damage which he may suffer by reason of failure to do so, and shall reimburse and repay the Owner all outlay and expense which the Owner may incur in making good for any such default thence this obligation shall be null and void; otherwise, it shall remain in full force and effect.

PROVIDED, HOWEVER, that no suit, action or proceedings, by reason of any default whatever be brought on his Bond after twelve months from the day on which the final payment under the Contract falls due.

PROVIDED, further, that the said surety or sureties, for value received hereby stipulate and agree that no change, extension of time, or addition to the terms of the Contract or to the work to be performed thereunder of the Specifications thereof shall in any way effect their obligations on this bond, and they do hereby waive notice of any such change, extension of time, alteration or addition to the terms of the contract, or to the work, or to the Specifications.

IN WITNESS WHEREOF, we have hereunto set our hands and seals, this the _____ day of _____, 2026, pursuant to the authority of the governing body of each of our respective parties.

NAME OF CONTRACTOR: _____
(Individual, Partnership, Joint Venture or Corporation)

By: _____
(Contractor's Signature)

(Print Name)

(Title)

(Witness)

(Print Name)

(Title)

By: _____
(Contractor's Signature)

(Print Name)

(Title)

(Witness)

(Print Name)

(Title)

By: _____
(Contractor's Signature)

(Print Name)

(Title)

(Witness)

(Print Name)

(Title)

NAME OF SURETY

By: _____
ATTORNEY-IN-FACT
Countersigned by Alabama Licensed Insurance
Producer for Surety, if applicable:

NOTICE TO INSURANCE PRODUCER:
Please print or write legibly your name and
Complete address below including
PRODUCER'S COMPANY

Producer's Name License No.

Address

PRODUCER'S COMPANY

PAYMENT BOND

KNOW ALL MEN BY THESE PRESENTS, that we _____

_____, as Principal, and _____

(Insert here the name & address of legal title of the Contractor)

_____ as Surety, are held and firmly

(Insert here the name and address of legal title of one or more sureties)

bound unto said DeKalb County Commission, a political subdivision of and body corporate in the State of Alabama, hereinafter called the Obligee, in the penal sum of _____ Dollars (\$ _____)

lawful money of the United States, for the payment of which sum and truly to be made, we bind ourselves, our heirs, personal representatives, successors and assigns, jointly and severally, firmly by these presents.

WHEREAS, said principal has entered into a certain Contract with said Obligee, dated _____ (Hereinafter called the Contract) for

(Date of Contract)

**Delivery & Installation of one (1) FEMA 361 Compliant
Pre-fabricated Structure 27'4" x 28' at the Adamsburg Volunteer Fire Department**

which Contract and the Specifications for said work shall be deemed a part hereof as fully as if set out herein.

NOW, THEREFORE, The Condition of this Obligation is such that if the said Principal and all subcontractors to whom any portion of the work in said contract is sublet and all assignees of said Principal and of such subcontractors shall promptly make payments to all persons supplying him or them with labor, materials, or supplies for or in the prosecution of the work provided for in such Contract, or any amendment or extension of or addition to said Contract, and for the payment of reasonable attorney's fees incurred by the successful claimant or plaintiffs in suits or claims against the contractor arising out of or in connection with the said contract, then the above obligation shall be void; otherwise to remain in full force and effect.

PROVIDED, HOWEVER, that this bond is subject to the following conditions and limitations.

(a) Any person, firm or corporation that has furnished labor, materials, or supplies for or in the prosecution of the work provided for in said Contract shall have a direct right to action against the Principal and Surety on this bond, which right of action shall be asserted in a proceeding, instituted in the County in which the work provided for in said Contract is to be performed or in any County in which said Principal or Surety does business. Such right of action shall be asserted in a proceeding instituted in the name of the claimant or claimants for his or their use and benefit against the Principal and Surety or either of them (but not later than one year after the final settlement of said Contract falls due) in which action such claim or claims shall be adjusted and judgment rendered thereon.

(b) The Principal and Surety hereby designate and appoint the President of the County Commission of DeKalb County, State of Alabama, or his successor or representative as the agent of each of them to receive and accept services of process or other pleading issued, or filed in any proceeding instituted on this bond and hereby consent that such service shall be the same as personal service on the Principal and/or Surety.

(c) The Surety shall not be liable hereunder for any damages or compensation recoverable under Workmen's Compensation or Employer's Liability Statute.

(d) In no event shall the Surety be liable for a greater sum than the penalty of this bond, or subject to any suit, action or proceeding, thereon that is instituted later than one year after the final settlement of said contract.

(e) This Bond is given pursuant to §39-1-1 of The Code of Alabama, 1975 edition.

The remaining on this page is intentionally left blank.

IN WITNESS WHEREOF, we have hereunto set our hands and seals, this the _____ day of _____, 2026, pursuant to the authority of the governing body of each of our respective parties.

NAME OF CONTRACTOR: _____
(Individual, Partnership, Joint Venture or Corporation)

By: _____
(Contractor's Signature)

(Witness)

(Print Name)

(Print Name)

(Title)

(Title)

By: _____
(Contractor's Signature)

(Witness)

(Print Name)

(Print Name)

(Title)

(Title)

By: _____
(Contractor's Signature)

(Witness)

(Print Name)

(Print Name)

(Title)

(Title)

NAME OF SURETY

By: _____
ATTORNEY-IN-FACT

Countersigned by Alabama Licensed Insurance
Producer for Surety, if applicable:

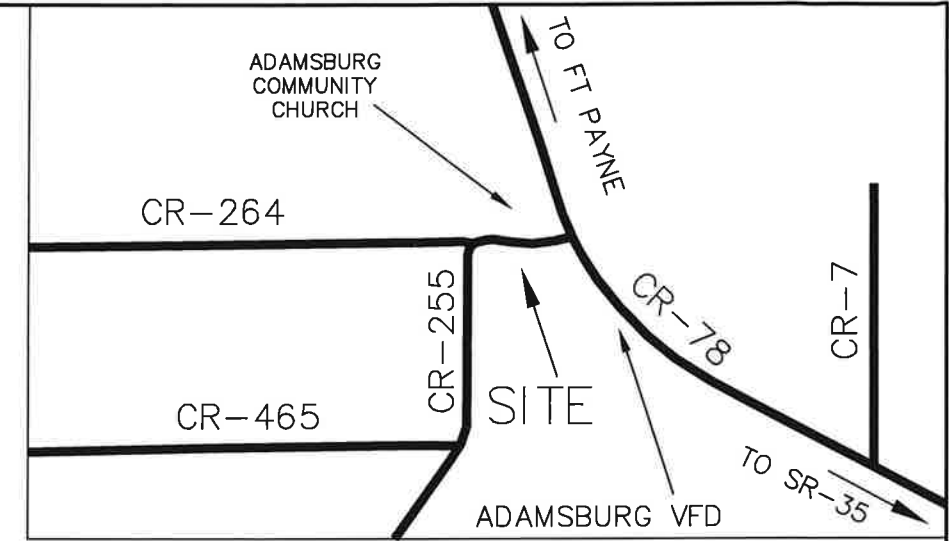
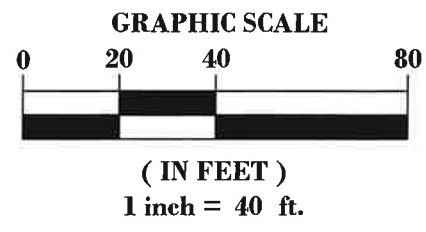
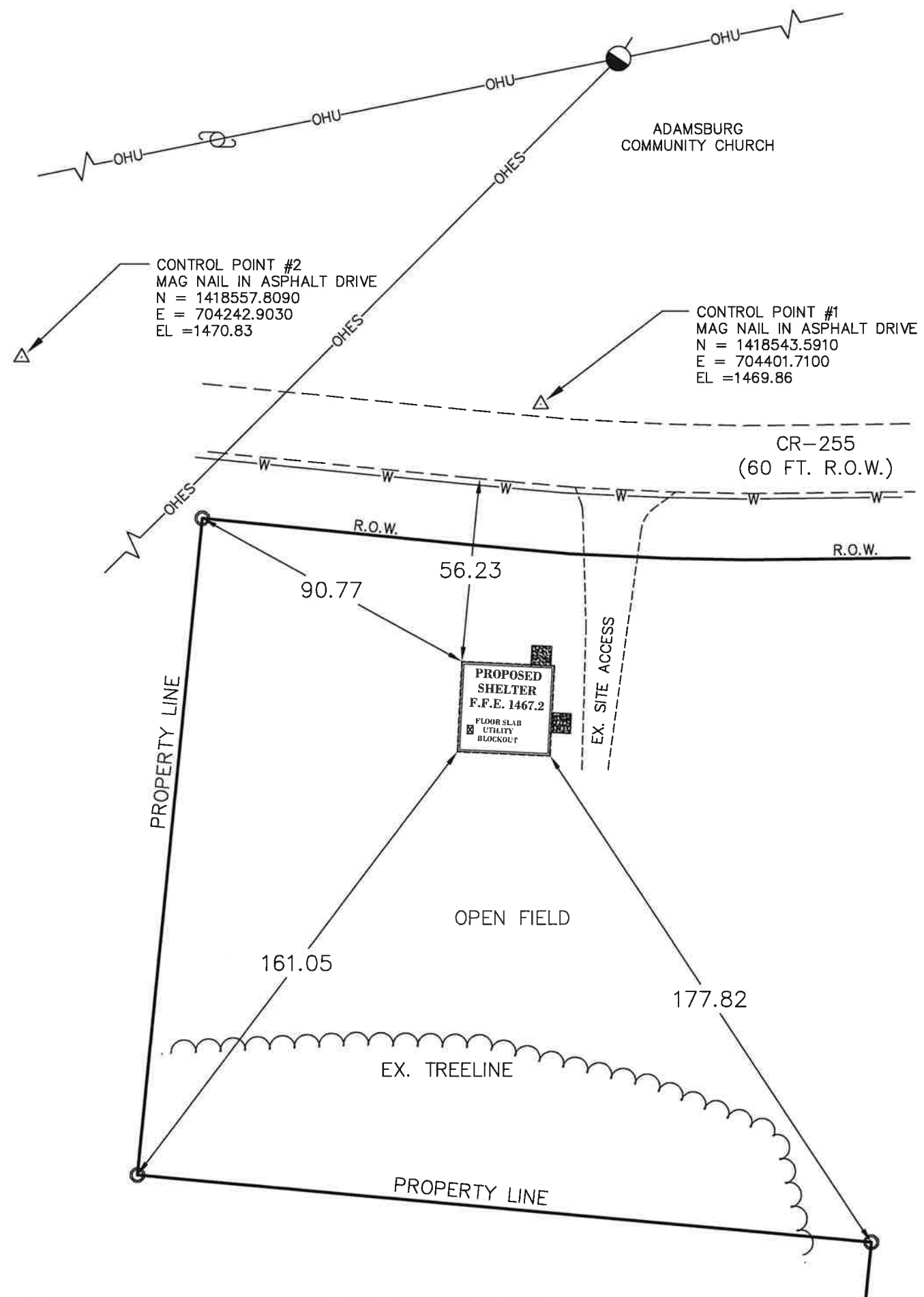
Producer's Name License No.

Address

NOTICE TO INSURANCE PRODUCER:



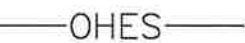
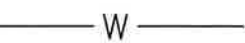


Please print or write legibly your name and
Complete address below including
PRODUCER'S COMPANY

PRODUCER'S COMPANY



VICINITY MAP
NOT TO SCALE

LEGEND

-  EX. CAPPED IRON PIN (CROFT)
-  EX. OVERHEAD UTILITIES
-  EX. OVERHEAD ELECTRICAL SERVICE
-  EX. 2 1/2" WATERLINE
-  EX. UTILITY POLE
-  EX. UTILITY POLE W/ GUY ANCHOR



SITE ENTRANCE COORDINATES:
N34.398908
W85.673388

DATE: 05/28/2026

PREPARED BY:
BENJAMIN P. LUTHER, P.E.
DEKALB COUNTY ENGINEER

**OVERALL SITE LAYOUT
FEMA 361 COMPLIANT STRUCTURE
BEHIND THE
ADAMSBURG VOLUNTEER FIRE DEPT.
FOR THE
DEKALB COUNTY COMMISSION**

PLAN SHEET NO.

1

I. GENERAL:

- A. These GENERAL NOTES present and /or summarize key project information for the plan reader's convenience. See also individual PLAN NOTES and project specifications for further details and requirements.
- B. These notes shall apply unless otherwise indicated by drawings or specifications.
- C. Contractor shall provide adequate bracing or shoring for all work during the construction period.
- D. Contractor must have onsite at all times a copy of the approved plans with the red Alabama Manufactured Housing Commission stamp.

II. DESIGN CRITERIA:

A. REINFORCED CONCRETE FOUNDATION:

- 1. See Geotechnical Engineering Report by Terracon Consultants, Inc., Project No. LW265018; dated May 8, 2026, included herein.
- 2. Spread footings with a minimum soil bearing capacity of 2000 PSF.
 - a. All footing excavations shall be checked by a geotechnical engineer for a minimum soil bearing capacity, prior to placement of any steel reinforcement or concrete.
- 3. Refer to Geotechnical Report for overexcavation procedures if unsuitable soils are encountered.
- 4. Material and construction specifications:
 - 1. Concrete 28-day Compressive Strength: 5000 PSI
 - 2. Steel Reinforcement: Conform to ASTM A615 Grade 60
- 5. Cost of reinforced concrete foundation shall include all unclassified excavation, all steel reinforcement including required embed plates, concrete, and any and all forming.

III. ELECTRICAL SERVICE NOTES:

- A. The contractor is responsible for obtaining and paying all required permits and inspection certificates.
- B. All work shall comply with IBC 2015, NEC 2014, State and Local codes. Verify with Fort Payne Improvement Authority and comply as required. (See herein provided "Installation Instructions for Mobile Home Overhead Service" detail sheet)
- C. Equipment, materials and installation shall be guaranteed for a period of one (1) year from date of acceptance. Defects which appear during this period shall be corrected at the expense of the contractor.
- D. Contractor will install the underground service lines from the disconnect to edge of the foundation to line up with the access port as closely as possible. The service line will then be installed vertically along the exterior of the wall to the access port. The required casing(s) shall be properly anchored to the wall, per shelter manufacturer and FPIA specifications. The unit price for electrical service shall include all fittings and materials necessary to tie the shelter's pre-installed electrical panel to the new meter base in the field, following installation of the modular unit.
- E. The length of the required service line is approximately 30 to 40 feet.
- F. FPIA requires a 200 amp disconnect at meter base.

IV. SANITARY SEWER NOTES:

- A. After completion of foundation excavation and acceptance of subsurface testing, the Contractor will be required to install a sanitary sewer stub-out below the bottom of the foundation, per shelter manufacturer's details. The vertical portion of the stub-out will need to project up into the middle of the floor slab blockout. The unit price for sanitary sewer shall include all fittings and materials necessary to tie the shelter's pre-installed system to the vertical stub-out in the field, following installation of the modular unit. Onsite septic system to be installed by others.

- B. The length of the required system may vary from 16 to 20 feet, depending on required elevations.

V. POTABLE WATER SERVICE NOTES:

- A. Contractor will be required to install a potable water service line stub-out below the bottom of the foundation, per shelter manufacturer details. The vertical portion of the stub-out may be adjacent to the sanitary sewer stub-out. Contractor will be required to excavate and tie on to the existing water service meter that will be installed by Fort Payne Water. The unit price for potable water service shall include all fittings and materials necessary to tie the shelter's pre-installed system to the newly installed system in the field, following installation of the modular unit. Stub-out shall be a subsidiary obligation.

- B. The length of the required 3/4" Diameter PVC system is approximately 80 feet.

VI. UNCLASSIFIED EXCAVATION AND GRADING:

- A. Contractor shall store excavated material onsite to be utilized for site grading purposes. Contractor shall grade the site so as to provide good drainage away from the shelter and landings and not cause any areas of ponding. After completion of all final grading operations, contractor shall stabilize the site by seeding and mulching. Contractor will be required to remove all unused material after final grading. Site grading and removal of excess material shall be a subsidiary obligation of Reinforced Concrete Foundation.

- B. An ADEM permit will not be required, as the site is less than one (1) acre in size.

VII. CONCRETE LANDINGS:

- A. 6' x 6' x 4" thick, 3,000 psi concrete pavement.
- B. Match finish floor elevation and slope away from shelter at approximately 2%.
- C. One edge of the landing shall line-up as closely as possible with the hinged-side doorframe so that the door opens to the outer edge of the landing, without leaving an edge dropoff.

VIII. SEQUENCE OF CONSTRUCTION:

- 1. Remove one (1) foot of topsoil from the approximate 30' x 30' shelter area and excavate beam foundations to required elevation. Subsurface base of foundation shall be tested by the County's geotechnical consultant for bearing capacity. (If subsurface fails, follow geotechnical report and Engineer's recommendations).
- 2. After acceptance of subsurface, install sanitary sewer and potable water stub-outs.
- 3. Place foundation forms to required elevation and install steel reinforcement and special angle embed plates. Request inspection from the Alabama Manufactured Housing Commission (AMHC) at least 72 hours prior to placement of concrete. (Inspection typically occurs the morning of the pour, with concrete pouring operations beginning immediately after inspection).
- 4. After inspection and acceptance by AMHC, place concrete to required elevation. After proper curing time, install vapor barrier and approximately three (3) inches of #57 stone on top of the vapor barrier over the subgrade within the cells between the beam foundations. Excavated material can be used to fill in the cellular areas prior to placement of vapor barrier.
- 5. Prefabricated shelter modules installed and finished, per shelter manufacturer details.
- 6. Grade site as necessary and construct concrete landings at exterior doors.
- 7. Install and complete tie-ins of potable water and the electrical service, in coordination with Fort Payne Water and Fort Payne Improvement Authority, respectively.
- 8. Perform any additional final grading and stabilize entire site with seeding and mulching.

PREPARED BY:
BENJAMIN P. LUTHER, P.E.
DEKALB COUNTY ENGINEER

PROJECT NOTES & GENERAL DETAILS
FEMA 361 COMPLIANT STRUCTURE
BEHIND THE
ADAMSBURG VOLUNTEER FIRE DEPT.
FOR THE
DEKALB COUNTY COMMISSION

PLAN SHEET
NO.

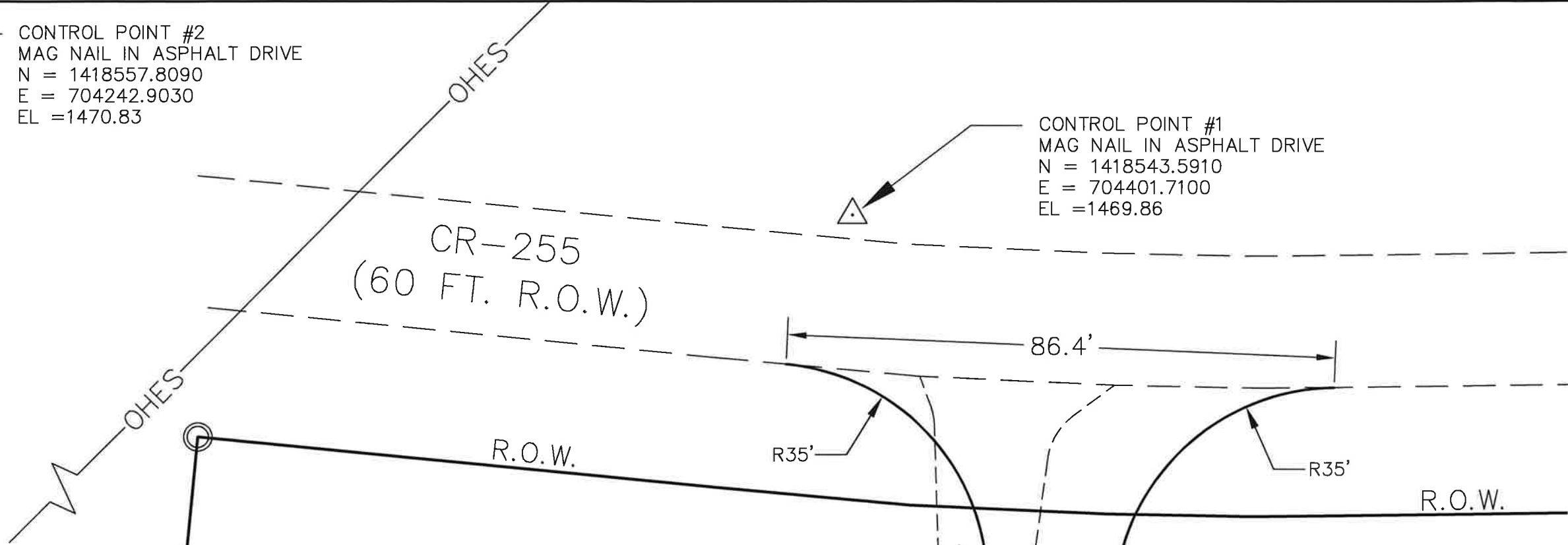
2

DATE: 05/28/2026

CONTROL POINT #2
MAG NAIL IN ASPHALT DRIVE
N = 1418557.8090
E = 704242.9030
EL = 1470.83

CONTROL POINT #1
MAG NAIL IN ASPHALT DRIVE
N = 1418543.5910
E = 704401.7100
EL = 1469.86

CR-255
(60 FT. R.O.W.)



PROPERTY LINE

OUTER EDGE OF FOUNDATION

EX. SPOT ELEV. 1466.40

EX. SPOT ELEV. 1466.22

EX. SPOT ELEV. 1465.79

EX. SPOT ELEV. 1465.21

EX. SPOT ELEV. 1465.06

TOP OF FOUNDATION ELEV. = 1466.5

EX. SITE ACCESS

REQ'D 6'x6' CONCRETE LANDINGS

PROPOSED ENTRANCE & PARKING LOT (BY COUNTY FORCES)

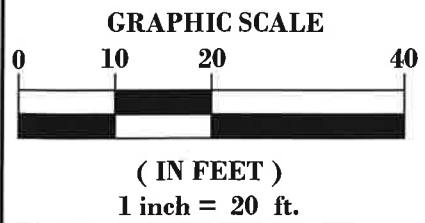
PREPARED BY:
BENJAMIN P. LUTHER, P.E.
DEKALB COUNTY ENGINEER

SITE PLAN
FEMA 361 COMPLIANT STRUCTURE
BEHIND THE
ADAMSBURG VOLUNTEER FIRE DEPT.
FOR THE
DEKALB COUNTY COMMISSION

PLAN SHEET NO.

3

DATE: 05/28/2026



CONTROL POINT #2
 MAG NAIL IN ASPHALT DRIVE
 N = 1418557.8090
 E = 704242.9030
 EL = 1470.83

CONTROL POINT #1
 MAG NAIL IN ASPHALT DRIVE
 N = 1418543.5910
 E = 704401.7100
 EL = 1469.86

CR-255
 (60 FT. R.O.W.)

NEW POLE W/ GUY ANCHOR
 (BY FPIA)

WATER METER
 (BY FPW)

R.O.W.

R.O.W.

REQ'D 200A METER POLE
 SET BY CONTRACTOR
 (PER FPIA SPECIFICATIONS)

REQ'D UNDERGROUND POWER
 FROM METER POLE TO OUTSIDE
 EDGE OF FOUNDATION BELOW
 EXTERIOR ACCESS PORT TO
 BREAKER BOX

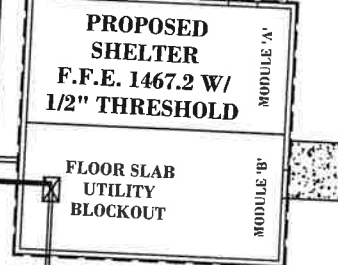
REQ'D 3/4" DIA.
 POTABLE WATER
 SERVICE LINE

REQ'D SCH. 40 PVC
 STUBOUT CASING

REQ'D 4" DIA. SCH. 40 PVC
 SANITARY SEWER HEADER PIPE
 STUBBED OUT FROM FOUNDATION
 BY APPROX. 4 FEET.
 (ONSITE SEPTIC SYSTEM BY OTHERS)

OUTER EDGE
 OF FOUNDATION

TOP OF FOUNDATION
 ELEV. = 1466.5



LEGEND

- EX. CAPPED IRON PIN (CROFT)
- OHE — PROPOSED OVERHEAD ELECTRIC (BY FPIA)
- PROPOSED UTILITY POLE W/ GUY ANCHOR (BY FPIA)
- W PROPOSED WATER METER (BY FPW)
- OHES — EX. OVERHEAD ELECTRICAL SERVICE
- W — EX. 2 1/2" WATERLINE

PROPOSED ENTRANCE
 & PARKING LOT
 (BY COUNTY FORCES)

PREPARED BY:
 BENJAMIN P. LUTHER, P.E.
 DEKALB COUNTY ENGINEER

UTILITY PLAN
 FEMA 361 COMPLIANT STRUCTURE
 BEHIND THE
 ADAMSBURG VOLUNTEER FIRE DEPT.
 FOR THE
 DEKALB COUNTY COMMISSION

PLAN SHEET
 NO.

4

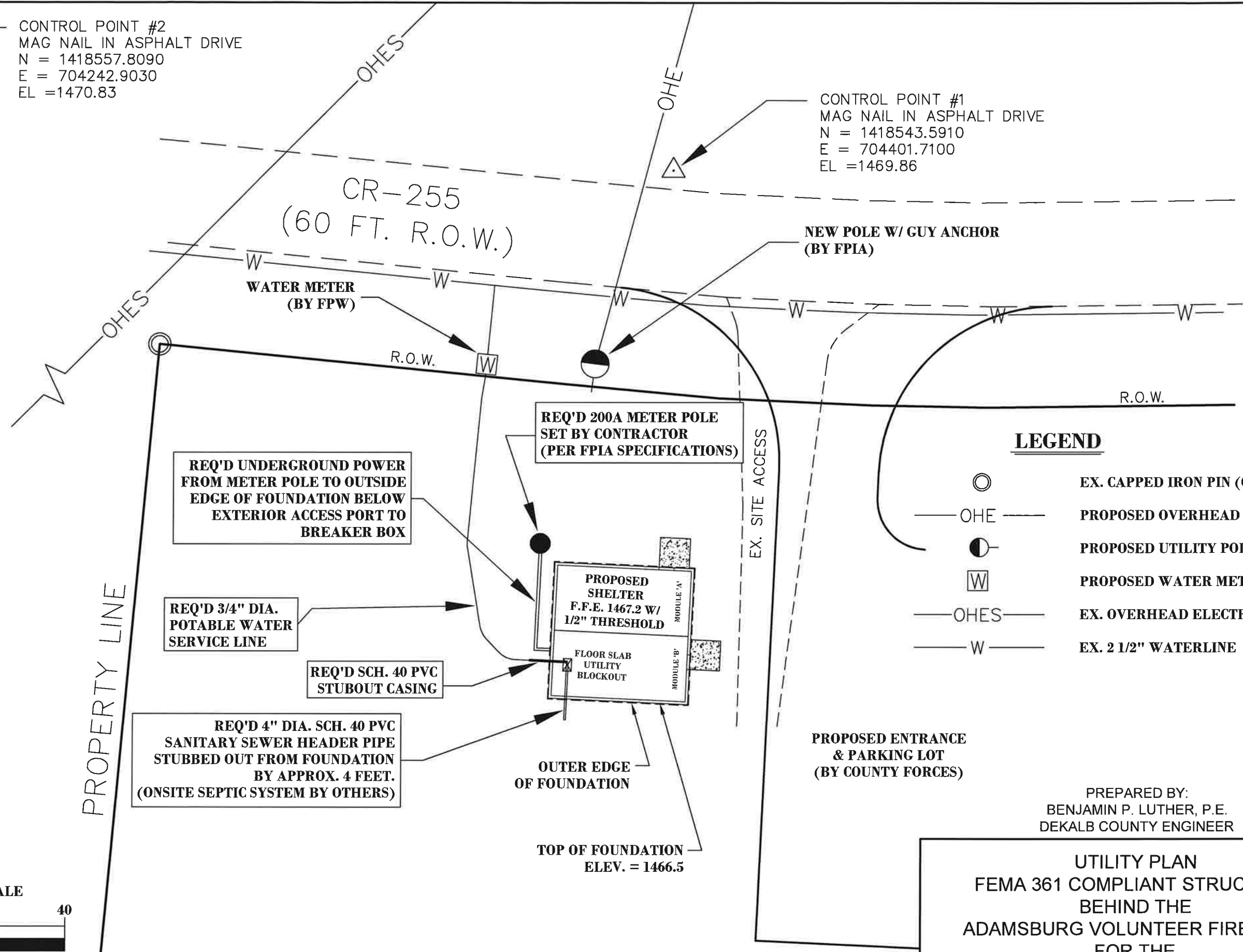
DATE: 05/28/2026

GRAPHIC SCALE



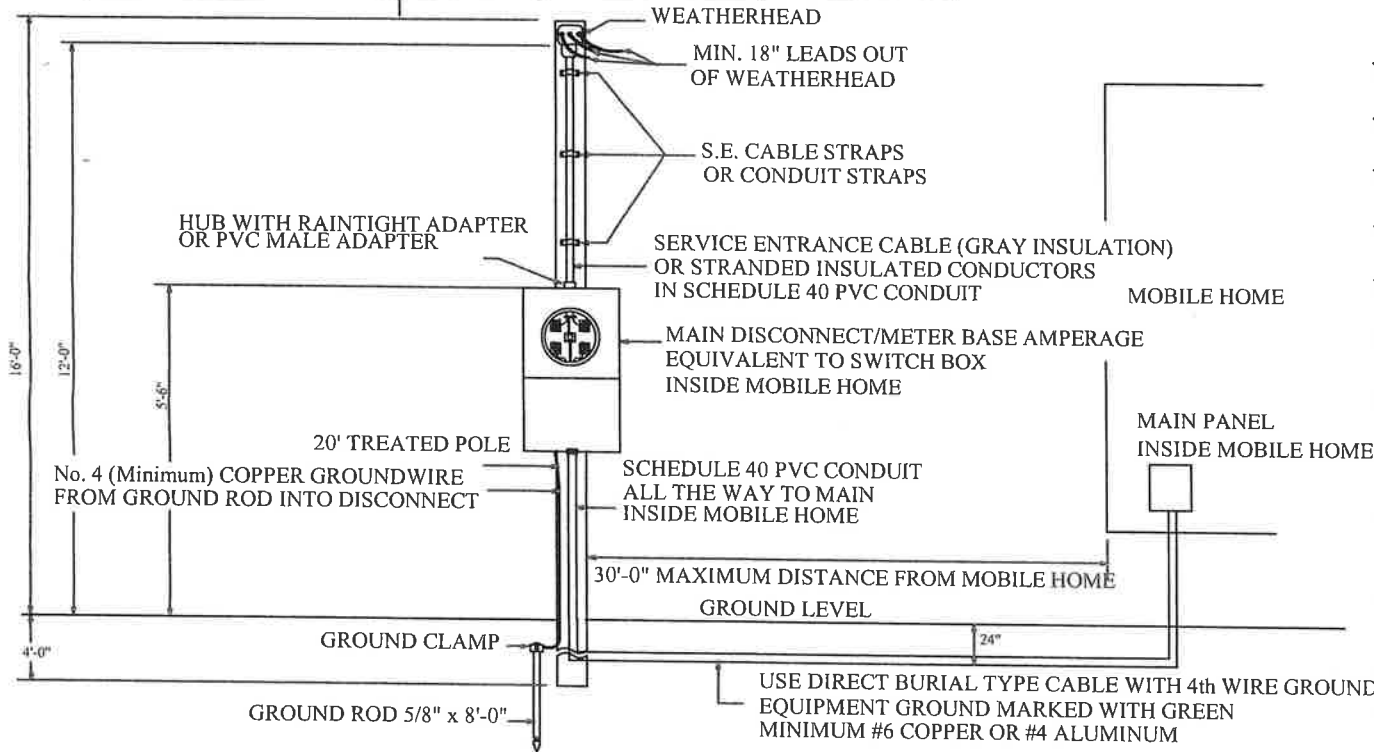
(IN FEET)
 1 inch = 20 ft.

PROPERTY LINE



**INSTALLATION INSTRUCTIONS FOR
MOBILE HOME OVERHEAD SERVICE
WIRE GUIDELINES CHART—MOBILE HOMES**

DISCONNECT	COPPER WIRE	ALUMINUM WIRE	CONDUIT SIZE
100 AMP	#2	#2	1 1/4"
200 AMP	3/0	4/0	2"
EQUIPMENT GROUND	#6	#4	



MOBILE HOME CHECKLIST

- ✓ IS THERE AN OUTSIDE DISCONNECT ADJACENT TO THE METER BASE RATED FOR MAIN BREAKER INSIDE MOBILE HOME
- ✓ IS THERE A FOUR WIRE SERVICE FROM THE DISCONNECT INTO THE MOBILE HOME (EQUIPMENT GROUND)
- ✓ IS THE POLE AT LEAST 20 FEET TALL AND AT LEAST FIVE INCHES IN DIAMETER?
- ✓ OR, IS THE POLE 20 FEET AND AT LEAST SIX BY SIX PRESSURE TREATED?
- ✓ IS THE POLE SET AT LEAST FOUR FEET INTO THE GROUND?
- ✓ IS THE POLE SET SO THAT THE WIRES TO THE WEATHER HEAD DO NOT CROSS THE ROOF OF THE MOBILE HOME?
- ✓ ARE THE METER BASE AND DISCONNECT MOUNTED ON PRESSURE TREATED MATERIAL?
- ✓ ARE THE METER AND DISCONNECT MOUNTED WITH TWO-INCH LAG BOLTS?
- ✓ ARE THE WIRES IN CONDUIT AT ALL POINTS THAT THEY ARE ABOVE THE GROUND?
NOTE: DO NOT USE SHIELDED ENTRANCE CABLE IN CONDUIT (GRAY INSULATION)
- ✓ IS THE WIRE APPROVED FOR UNDERGROUND SERVICE?
NOTE: DO NOT USE SHIELDED ENTRANCE CABLE FOR DIRECT BURIAL
- ✓ USE PENATROX OR OXYGUARD ON ALL ALUMINUM CONNECTIONS
- ✓ POLE CAN NOT BE LOOSE IN GROUND
ADD QUICKCRETE AS FILL